

# DISPENSING SYSTEMS Catalog

**DEMA**<sup>®</sup>  
DEMA Engineering Company



# DEMA ENGINEERING COMPANY



DEMA ENGINEERING COMPANY is a family owned and operated designer and manufacturer of fluid control and dispensing equipment established in 1956. Based in St. Louis, Missouri USA, DEMA also has manufacturing and warehouse facilities in Zeewolde, Netherlands and Sydney, Australia and a Representative Office in Shanghai, China and Sao Paulo, Brazil.

DEMA has been a leading supplier of chemical dispensing equipment for over 50 years. Our products are used to safely and accurately blend chemicals and water for a variety of applications, including housekeeping, food service, food processing, supermarkets, schools, hospitals and car wash.

In 1956 DEMA introduced the "proportioner" to the institutional chemical market and has continually developed products that keep our customers coming back. DEMA produces high quality products that our customers can rely on with little or no maintenance.

In 1996 DEMA entered the electronic dispensing market with the introduction of our DrainMaster. Eleven years later our electronic dispensing line consists of innovative products, including the TITAN dishwash dispenser, ATLAS on premise laundry dispenser, and OLYMPIAN mini pump. These products are complemented by a full range of drain, liquid and solid dishwash and laundry dispensing systems.

With our current product line, DEMA can truly solve all of your chemical dispensing requirements.

**THE DEMA DIFFERENCE:** Our goal is to make your buying experience with DEMA a pleasurable one and one that will be repeated. We are committed to offering the highest level of both customer and technical service. Our customer service staff is trained to help you choose the correct equipment for your application.

---

## The DEMA MISSION:

To expand our heritage as  
designers and manufacturers  
of high quality dispensing  
and fluid control products  
by being the most innovative  
company in our industry, providing  
quality products with unique  
features that meet or exceed the  
need of our global customers,  
and doing so in a timely manner  
at a competitive price.

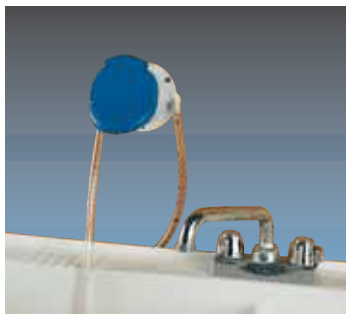
---

**TABLE OF CONTENTS**

- 2 Food Service Kitchen Dispensers**  
Wall Mounted Pumps, Faucet Proportioners
- 3 Food Service Kitchen Dispensers**  
Single and Dual Sink Dispensers, Faucet Adapter Kits, Drain Pumps
- 4 Warewash Dispensers**  
Titan Probe/Probeless Dispensers
- 5 Warewash Dispensers**  
Probe and Probeless Models
- 6 Warewash Dispensers**  
Olympian Mini Pumps and Universal Bowls
- 7 Solid Product Dispensers**  
Pot and Pan and Solid Laundry Dispensers
- 8 Warewash Dispenser Parts**  
Circuit Boards, Tubing, Motors and more
- 9 Warewash and Laundry Dispenser Parts**  
Pump Kits, Installation Kits, Laundry Circuit Boards, Handheld Devices,  
and Flush Manifolds
- 10 Laundry Dispensing Systems**  
844 Liquid LaundryMaster Series, Atlas and Enhanced Digital Select Module
- 11 Laundry Dispensing Systems**  
845 Industrial LaundryMaster Series, 830 and 840 Timer Series
- 12 Dilution at Hand Housekeeping Dispensing Systems**  
Single Station Dilution At Hand Dispensers
- 13 Dilution at Hand Housekeeping Dispensing Systems**  
Multi-Station Dispensers and Storage Rack Systems
- 14 Blend Safe II Housekeeping Dispensing Systems**  
Enclosed, Locking Systems and Dispensers Only
- 15 Blend Centers and Blend Safe Dispensing Systems**  
Single and Multi-Station Dispensers, Stainless Steel Locking Dispensers
- 16 Blend Center and Blend Safe Parts**
- 17 Industrial Dispensing Systems**  
High Flow Dispensers and Drum Mount Proportioners
- 18 SprayClean Dispensing Systems**  
Roam 'n Foam Dispensers
- 19 SprayClean Dispensing Systems**  
Select-O-Matic, Mobile Dispensers, Spray Guns, Foam Wands and Hoses
- 20 Compressed Air Foam Dispensing Systems**  
Compressed Air Foamers, Foam Wands, Hose End Foamers
- 21 Compressed Air Foam Dispensing Systems**  
FoamStation Dispensers, Mobile FoamStation Dispensers
- 22 MixRite Proportioning Pumps**  
Standard and Bypass Models
- 23 MixRite Foamers and Panel Systems**  
Wall and Cart Mounted Foaming and Spraying
- 24 Chemical Injectors and SprayCleans**

### 302 Series Hand Pump

Designed to pump 1 or 2 ounces (30 or 60 milliliters) of detergent, sanitizer, or other chemical into kitchen sink, bottle, dry cleaning machine, or any open container where chemical is mixed with water. Each push delivers 1 or 2 ounces with the pump automatically maintaining its prime for future use.



302-1E



302-2S-SP

- 1 or 2 ounce pumps available (30 or 60 milliliters)
- Polypropylene body and polyethylene bellows for chemical resistance
- Epdm, silicone, or viton seals available on check valves
- Chemical does not come in contact with spring
- Mounts on any vertical or horizontal surface
- Optional spout available (part number 30-81-1)

MODEL No.	FLOW	CHECK VALVE SEAL
302-1E	1 ounce (30 ml)	epdm
302-1S	1 ounce	silicone
302-1V	1 ounce	viton
302-2E	2 ounce (60 ml)	epdm
302-2S	2 ounce	silicone
302-2V	2 ounce	viton

**Add suffix -SP at end of number for unit to include spout**  
 Example: 302-1E-SP

EPDM seals recommended for detergent use  
 Silicone seals recommended for chlorine use  
 Viton seals recommended for solvent use

### Faucet Mounted Proportioners

DEMA Faucet Proportioners attach to any standard faucet and dispense a chemical and water mixture into the sink by either pushing a button or sliding a knob. Chemical dilution is determined by using metering tips on some units and a metering screw adjustment on others.

#### Models 151 and 153

Use color coded metering tips to determine dilution ratio  
 Standard tip kit is 100-15K  
 Ultra Lean tip kit is 100-15KU

#### Models 152 and 154

Use metering screw adjustment to determine dilution ratio

#### Models 153 and 154

Include a built in ASSE approved siphon breaker

#### Model 167 and 167T

Uses a slide valve actuator to determine if a chemical solution is dispensed or water only. Unit is available standard with metering screw and metering tips.



Model 153



Model 167

#### Special adapters available for faucet proportioners

- 150-9-2 Irregular faucet adapter (uses rubber sleeve and worm clamp to attach on)
- 150-21 Inside Aerator Thread Adapter
- 150-22 Outside Chicago Thread Adapter
- 150-32 Inside Kohler Thread Adapter

## Single and Dual Sink Dispensers

### Model 651GAP or 651AG

Single Sink Dispenser dispenses one product into a kitchen sink with the turn of a ball valve.

### Model 652GAP or 652AG

Dual Sink Dispenser dispenses two products into a kitchen sink with the turn of a ball valve.

#### GAP models include:

DEMA's ASSE 1055B approved Action Gap backflow preventer.

AG models include DEMA's Ultra Gap air gap proportioner



651GAP



652GAP (shown with 68-4 Faucet Adapter Kit)

## Faucet Adapter Kits

### Model 68-4 Faucet Adapter Kit

Makes installing proportioning equipment over the sink neat and easy. The kit includes adapters for Chicago, Fisher, and T & S faucets. A pre-built manifold consisting of a tee, ball valve, and water hose allows user to control water flow to sink or dispenser.

#### Model 68-4-2

Includes Fisher adapters only and manifold assembly

#### Model 68-4-3

Includes Chicago adapters only and manifold assembly

#### Model 68-4-4

Includes T & S adapters only and manifold assembly

#### Model 68-4-7

Includes large T & S adapters only and manifold assembly

#### Model 68-21

T & S Scrap hose sink adapter kit

**Model 591 Water Diverter Valve** screws on end of faucet and diverts water to dispenser by pulling a plunger while water is on.



591

## Drain Dispensing Systems



257B



259B

### Model 257B and 259B

Automatically feed chemicals into drains and grease traps to break up grease and detergent buildup and eliminate odors.

#### Model 257B

Operates on 12VDC plug-in transformer (included) or 2 alkaline lantern batteries

#### Model 259B

Operates on 12VDC plug-in transformer (included) only

#### Model 259BAC

Operates on a 120/230 VAC transformer (no plug-in connection included)

Features for all units

- 9V battery for memory backup in case of power failure
- Pumps once per hour up to 24 hours per day
- Easily programmable dip switches
- External prime switch
- IP-55 watertight case with o-ring seal

#### Model 259BT

Dispenses chemical into trash bins or dumpsters using the 259 electronics and a misting nozzle. Uses 3-prong, 6 feet cord (included) wired to transformer inside case. Comes complete with LPDE tubing and nozzle.



259BT

## TITAN Warewash Dispensers

### Probe and Probeless Operation with Auto-Switchover

DEMA's TITAN range of warewash dispensers was developed to reduce the number of service calls and create a more profitable installation at all types of warewash accounts. The unit can be set up in probe or probeless mode, depending on the installation requirements. If set up in probe mode, the unit will automatically switch over to probeless mode if any of the following parameters are met:

- Shorted probe
- Open probe
- Limed up probe
- Dispenser does not feed for a period of time
- Dispenser over feeds for period of time

Once the parameter is met, the unit will switch itself back to probe mode. This feature should greatly reduce the number of service calls and allow better use of service and sales groups' time. The TITAN is truly a first of its kind; a dispenser that will pay for itself.



T-813-DLL



T-812-LL

Quick change pump cover being removed with no tools



## Features and Benefits

### Enclosure

- Modular design allows for easy conversion to 3 product system
- ABS material for durability
- Stainless steel mounting plate for easy wall removal
- Digital display

## Features and Benefits continued

### Pumps

- Quick change squeeze tube with no tools required (patent pending design)
- Quick connect fittings
- Spring loaded 2-roller design for extended tubing life
- 16 ounces per minute with 105 RPM gearmotor

### Electronics and Programming Specifications

- Programmable with keypad for quick setup
- Four trigger options
- Pre-wired for quicker installation
- Power supply similar to laptop computer
- Separate trigger board for 24VAC to 480VAC
- Probeless alarms for liquid or dry products
- Diagnostic mode
- Feed rate adjustment adapts to size of machine
- Non-volatile memory allows pre-programming prior to installation
- Built in rack counter
- Multilingual
- Programmable company information and service message to personalize dispenser

### TITAN ACCESSORIES:

#### Model 82-23-1 Magnetic Field Sensor

Patent-pending technology to reduce installation time and create a safer environment for service personnel.

- Eliminate need for direct electrical connection to customer's equipment
- Provide electrical isolation from control circuits
- Eliminate need to get into control box on warewash machine

#### Model 82-28-1 Inductive Probe

Higher technology probe designed so the coils never see chemical or hard water in the warewash machine, thus making it a non-service item.

- Significant reduction in probe maintenance
- Temperature compensation built into probe for more accurate readings
- Helps maintain more accurate detergent concentration

MODEL NO.	NUMBER OF CHEMICALS	PUMP OR SOLENOID VALVE
T-811-L	1	Pump
T-811-D	1	Solenoid Valve
T-812-LL	2	Pump/Pump
T-812-DL	2	Solenoid/Pump
T-813-LLL	3	Pump/Pump/Pump
T-813-DLL	3	Solenoid/Pump/Pump

All models come complete with probe, detergent injection fitting, rinse injection fitting, mounting plate, and poly tubing

## DEMAMaster™ Probe Dispensers

DEMA offers a complete range of Warewash dispensers operating with probe technology in 1,2, and 3 pump or solenoid configurations. DEMAs patented probe circuit technology samples the probe 1/60th of every second, thus increasing the unit's probe life by reducing the amount of plating, corroding or dissolving of the probe tips.

### Features for DEMAMaster Series

- Smooth adjustment on rinse speed control
- Over 2000 hours on gearmotor brush life
- Metal gear box, reduced gearmotor noise
- IP-55 splash proof plastic case
- Stainless steel rinse line check valve (Techtron chlorine resistant models also available)
- Extended squeeze tubing life
- Rinse delay for up to 12 seconds and rinse limit after pump has run 18 seconds

MODEL No.	NUMBER OF CHEMICALS	PUMP OR SOLENOID
DM-811-L-1T	1	Pump
DM-811-D-1T	1	Solenoid
DM-812-LL-2T	2	Pump/Pump
DM-812-DL-2T	2	Solenoid/Pump
DM-813-LLL-2T	3	Pump/Pump/Pump
DM-813-DLL-2T	3	Solenoid/Pump/Pump
DS-812-LL-2T	2	Pump/Pump
DS-812-DL-2T	2	Solenoid/Pump
DS-813-LLL-2T	3	Pump/Pump/Pump
DS-813-DLL-2T	3	Solenoid/Pump/Pump

*DS Models are field convertible between 2 and 3 product installations. Packaged in a stainless steel case with enough room for easy retrofitting.*



**DM-811-L-1T**



**DM-812-LL-2T**



**DS-813-LLL-2T**

## DEMAMaster™ Probeless Dispensers



**DM-812-PDL-2T**



**DM-811-SC-1T**

DEMAMaster Probeless dispensers function using door counts, time or speed control to determine the amount of detergent and rinse put into the dish machine. The unit uses door openings on a door machine or time on conveyor machines to determine the amount of detergent. Two banks of dip switches inside the dispenser allow user to easily program initial charge and recharge times. When using door machine mode, dead cycles can be implemented to prevent unit from adding detergent each cycle.

MODEL No.	NUMBER OF CHEMICALS	PUMP OR SOLENOID
DM-811-PL-1T	1	Pump
DM-812-PLL-2T	2	Pump/Pump
DM-812-PDL-2T	2	Solenoid/Pump
DM-813-PLLL-2T	3	Pump/Pump/Pump
DM-813-PDLL-2T	3	Solenoid/Pump/Pump
DS-812-PLL-2T	2	Pump/Pump
DS-812-PDL-2T	2	Solenoid/Pump
DS-813-PLLL-2T	3	Pump/Pump/Pump
DS-813-PDLL-2T	3	Solenoid/Pump/Pump

*DS Models are field convertible between 2 and 3 product installations. Packaged in a stainless steel case with enough room for easy retrofitting.*

### DM-811-SC-1T

1 Pump operated by speed control dial only

### DJ-812-LL-1T

2 Pump, low cost dispenser for detergent and rinse. Both products are dispensed during the final rinse cycle and are controlled by independent speed control dials. Perfect for single tank machines that fill through the rinse line.

### 82-1 Low Level Alarm Kit

May be easily added to any DEMAMaster dispenser that is pumping liquid products. This versatile, compact system is used to indicate the absence of liquid products and then uses an alarm to inform the user that the pail is empty. The circuit board is powered by 24VAC.

## Olympian Mini Pumps

Ideal applications include under-counter washers, glass washers, and small commercial machines. Pumps are color coded for detergent concentration (red), detergent time (white), rinse (blue), and sanitizer (yellow).

### Specifications

- Dual voltage (110 V and 220 V) or high voltage only (220V) models
- Mini quick change pump allows tubing replacement in seconds
- Complete pump assembly removes without tools
- Units programmed via plug in 2 button programmer



O-CDV



O-PDV



O-RDV



O-SDV

### 81-245-1 2 Button Programmer

Model No.	Application	Color	Specifications
O-CDV	Detergent	Red	110 or 220 volt, concentration
O-CHV	Detergent	Red	220 volt, concentration
O-PDV	Detergent	White	110 or 220 volt, time
O-PHV	Detergent	White	220 volt, time
O-RDV	Rinse	Blue	110 or 220 volt, speed control
O-RHV	Rinse	Blue	220 volt, speed control
O-SDV	Sanitizer	Yellow	110 or 220 volt, speed control

## Universal Bowls

Universal Bowls dispense solid chemicals or encapsulated powders into dish machines, sinks, laundry machines, or any other open reservoir. The 581 Bowl's flexibility allows it to be used for solid pot and pan detergent, solid rinse products, solid laundry products, solid car wash, and other solid chemicals.

- Mounts on any vertical surface or directly on top of a dish machine
- Molded plastic vacuum breaker that meets ASSE 1001 (brass siphon breaker available)
- Spray arm with vacuum breaker can be mounted on either left or right side
- John Guest fittings on vacuum breaker for easy and secure tubing installation

**581-WMBH** Includes wall mounting kit and bulkhead fitting for dish machine use

**581-1T** Includes bulkhead fitting for dish machine use

**581-1W** Includes wall mounting kit for over a kitchen sink (no bulkhead fitting)

**581-RB** Solid Rinse Bowl with solenoid valve and level control (24VAC standard voltage)

**581-RB-4** Solid Rinse Bowl with solenoid valve and level control (24VDC standard voltage) use with Titan

**581-1S** Bowl with 24VDC solenoid valve



581-WMBH



581-RB



## Solid Product Dispensing Systems

**581P-2W Sure-Timer II** is a completely enclosed dispensing system for solid pot and soap, solid presoak, solid floor cleaner, and solid laundry products.

- Equipment tray attaches to bowl with a plastic nut and is sealed by an EPDM gasket
- Secure programming method prevents misuse during operation
- 5 Minute dwell time can be set to prevent continuous operation
- Eight C size batteries allow over 10,000 cycles due to latching valve technology
- Solenoid valve can be serviced without removing drip tray

**Model 581A-2W** includes a 110 VAC plug-in transformer to operate instead of battery use.



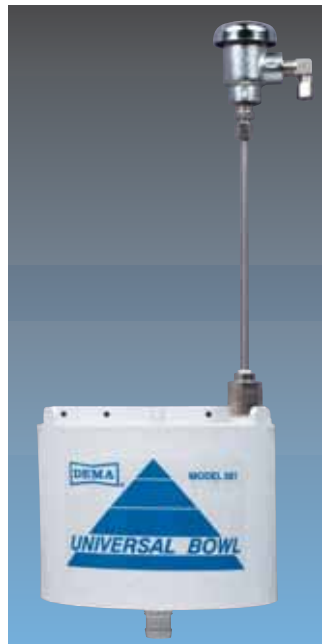
**581-1BV**

### Model 581-1BV Manual Bowl Dispenser

Uses a 1/4 turn ball valve to control the water flow to dispense pot and pan detergent into a kitchen sink. Needle valve controls chemical concentration by adjusting water flow. All of the water flow is directed through the vacuum breaker to meet plumbing codes



**581P-2W**



**581-1WMBH-B**

### Universal Bowl with Brass Siphon Breaker

**581-1WMBH-B**

(see page 6 for features)

**581-1RB-B**

(see for features)



**581KS-1W**

### Model 581KS-1W Solid Laundry Dispenser

Is a machined triggered dispensing system designed to easily and economically dispense solid laundry products. Programming is done with a removable 2 button programmer to avoid end user tampering. Color LED's indicate which function is running (delay, run time and lock out) and which function is being programmed with the 2 button programmer.

- Maximum delay is 20 minutes
- Maximum lock out time is 75 minutes
- Maximum run time is 5 minutes or 40 ounces

### Model 581KSI-1W Solid Laundry Dispenser

Operates similar to the 581KS-1W but it includes an injector mounted below the equipment tray that mixes the diluted product from the bowl reservoir with water and delivers it up to 50 feet (15 meters) away from the dispenser.

## TITAN and DEMAMaster™ Parts

### Circuit Boards

- 81-118-1** Detergent Circuit Board for Probe Series Dispensers (DM-812-LL-2T)
- 81-118-5** Detergent Circuit Board for Probeless Series Dispensers (DM-812-PLL-2T)
- 81-118-2** Rinse Speed Control Circuit Board with delay and limit operation for Probe and Probeless Dispenser Series.
- 81-118-3** Dual Rinse Speed Control Circuit Board with delay and limit operation for three product Probe and Probeless Dispensers where sanitizer pump is used. (DM-813-LLL-2T)
- 81-205-1** Titan Control Board and Display
- 81-118-11-3** Titan Trigger Board with One 5-Conductor Cable

### Pump Squeeze Tubing

*For metric conversion to millimeters see inside back cover of catalog*

- 25-65CE-11** 11" Detergent Squeeze Tube EPDM (1/2" OD X 1/4" ID)
- 25-65CE-600** 50' Roll Detergent Squeeze Tubing EPDM
- 25-65CV-11** 11" Detergent Squeeze Tube Viton (1/2" OD X 1/4" ID)

- 25-65CN-11** 11" Detergent Squeeze Tube Santoprene (1/2" OD X 1/4" ID)
- 25-65RE-11** 11" Rinse Squeeze Tube EPDM (1/2" OD X 3/16" ID)
- 25-65RE-600** 50' Roll Rinse Squeeze Tubing EPDM
- 25-65SE-11** 11" Rinse Squeeze Tube EPDM (1/2" OD X 1/8" ID)
- 25-89CE-14** 14" EPDM Squeeze Tube 5/8" OD
- 25-89CE-600** 50' Roll EPDM Squeeze Tubing 5/8" OD
- 81-17-1** 1 oz. Squeeze Tube Lube
- 81-17-5** Tube Lube one time use
- 81-177-1** Quick Change Pump Detergent Tubing Assembly (7/16" OD X 1/4" ID, EPDM, 1/4" Quick Connect Ready)
- 81-177-2** Quick Change Pump Rinse Tubing Assembly (3/8" OD X 1/8" ID, EPDM, 1/4" Quick Connect Ready)
- 81-177-3** Quick Change Pump Low Volume Detergent Tubing Assembly (3/8" OD X 3/16" ID, EPDM, 1/4" Connect Ready)

\* All Quick Change pump tubes come assembled with fittings required to connect to John Guest fitting unions.

### Probes and Fittings

- C-12B** Detergent Probe
- 80-55** 90 Degree ELL Fitting for Liquid Detergent Connection
- 58-5** 70 Degree ELL Injection Fitting for Bowl Connection
- 904-8S** 1/4" Tube X 1/8" NPT Stainless Steel Check Valve with Stainless Ball
- 904-8T** 1/4" Tube X 1/8" NPT Stainless Steel Check Valve with Teflon Ball
- 904-4S** 1/8" Tube X 1/8" NPT Stainless Steel Check Valve with Stainless Ball
- 904-4T** 1/8" Tube X 1/8" NPT Stainless Steel Check Valve with Teflon Ball
- 904-8P** 1/4" Tube X 1/8" NPT Techtron Check Valve (chlorine resistant)
- 904-4P** 1/8" Tube X 1/8" NPT Techtron Check Valve (chlorine resistant)

### Solenoid Valves

- 442J-WW-4B** Brass Solenoid Valve with cover and bracket
- P442J-WW-4** Celcon Solenoid Valve with cover and bracket



### Motors and Transformers

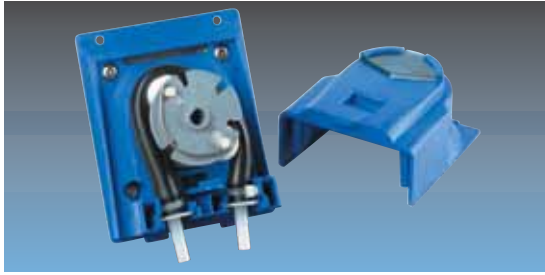
- 80-59-15MK** Gearmotor 15 rpm 24 vdc (Metal)
- 80-59-60MK** Gearmotor 60 rpm 24 vdc (Metal)
- 80-59-105MK** Gearmotor 105 rpm 24 vdc (Metal)
- 81-14-120** Gearmotor 120 rpm 230 vac (Metal)
- 81-13-100** Gearmotor 100 rpm 120 vac (Metal)
- 81-13-120** Gearmotor 120 rpm 120 vac (Metal)
- 80-70** 40VA Transformer
- 80-70-460** 40VA Transformer 460 vac to 24 vac
- 81-13-115** Gearmotor 115 rpm 115 vac (Metal)
- 81-14-230** Gearmotor 115 rpm 230 vac (Metal)
- 81-15-115** Gearmotor 60 rpm 115 vac (Metal)

### Miscellaneous Parts

- 58-2** ASSE 1001 Approved Plastic Siphon Breaker with Fittings
- 81-53** Test Kit
- 25-68-20** 20' Poly Tubing 1/4" OD
- 80-66** 10" Pick Up Tube 1/4" ID
- 80-66-2** 18" Pick Up Tube 1/4" ID



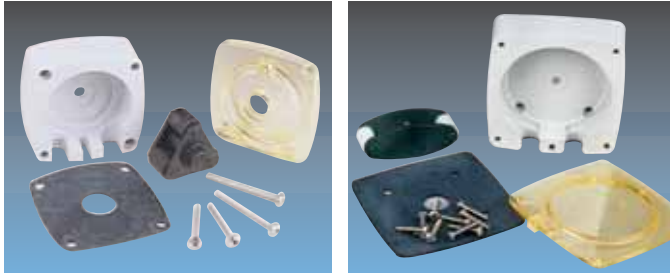
## Pump Head Kits



### Quick Change Pump with cover off

#### Quick Change Pump

- 81-118-15 Detergent Pump Kit-2 Roller Spring Loaded
- 81-118-16 Rinse Pump Head Kit-3 Roller Fixed
- 81-118-17 Detergent Pump Kit-2 Roller Fixed



25-C2

25--130-1

#### C2 and C4 Pump

- 25-C2 Tri-Roller Rinse Pump Complete
- 25-C2D Dual Roller Detergent Pump Complete
- 25-130-1 Large Pump Kit Complete

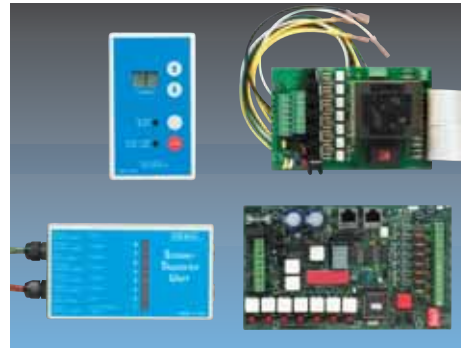
## Installation Kits for all LaundryMaster Dispensers:

Includes 20' LDPE tubing, tie wraps, and one 18" pickup tube per pump

- 85-15-3 Three Pump Installation Kit
- 85-15-4 Four Pump Installation Kit
- 85-15-5 Five Pump Installation Kit
- 85-15-6 Six Pump Installation Kit

## Laundry Dispenser Circuit Boards and Power Supply

- 84-65-28 IQ-85 Circuit Board for 844P Atlas
- 84-65-2 IQ-80 Circuit Board
- 84-65-22 DC Relay Circuit Board
- 84-65-1 AC Laundry Conversion Kit
- 84-65-6 Signal Transfer Unit (STU)
- 84-65-9 Power Supply



**84-65-1**  
AC Laundry  
Conversion Kit

## Hand Held Laundry Programming Devices and Cables

- 84-65-24 Enhanced Digital Select Module (EDSM)
- 84-65-31 Universal Select Module for use with Atlas (20 formulas) and LaundryMaster (9 formulas) systems
- 84-27-3 25 feet RJ-45 Cable
- 84-27-4 6 feet RJ-45 Cable



84-65-24 EDSM



84-65-31 USM

## 950 Flush Manifold Series

950 Flush Manifold dilutes concentrated product with water and delivers chemical solution to laundry machine in a safe and efficient manner. Flush manifold comes complete with solenoid valve, pressure switch, and up to six chemical inlets. Chemical inlets are either 1/4" barb or compression or 3/8" barb or compression. Units can be easily field converted from one connection to another.

MODEL No.	FITTING	SIZE
950-1B	Barb	1/4"
950-1C	Compression	1/4"
950-2B	Barb	3/8"
950-2C	Compression	3/8"



950-2B

*Flush Manifold  
Mounting Kit,  
Part number 84-65-10,  
allows flush manifold  
to be mounted directly  
to 844 series  
LaundryMaster*

## 844 LaundryMaster™ Series

### 844 LaundryMaster with Enhanced Digital Select Module (EDSM)

Liquid Laundry Dispensers can be equipped with 3,4,5, or 6 pumps and supplied with DEMA's Enhanced Digital Select Module (EDSM) or Universal Select Module (USM), a 9 formula keypad.

#### Features for the LaundryMaster series

- Dual chemical injections per formula
- Low voltage wiring into dispenser
- Quick change peristaltic pumps for easy and fast tubing replacement
- RJ45 data communication connections
- 80VA transformer on fused power supply board for additional safety
- Main circuit board Is 24VAC

#### Features for Enhanced Digital Select Module (EDSM)

- Stores up to 20 formulas and can program any number of dispensers
- Easy and quick programming done at convenient location
- Multi-language programming
- Password protected
- Non-volatile memory stores programming

#### Operating Function Modes:

**AUTO FORMULA SELECT:** Allows laundry machine microprocessor to choose formula soil classification by sending an appropriate length signal to main control board. Control board has 9 formula memory.

**RELAY:** Allows sophisticated laundry machine microprocessors to control all functions of the dispenser. Will accept any number of programs sent by the laundry machine microprocessor.

**SEQUENCE:** Used on non-programmable, fixed time, and older machines that do not have adequate programming functions. Operates by counting drain closings and pumping pre-determined amounts of product at correct drain closing. Control board has 9 formula memory.

**MANUAL FORMULA SELECT:** 9 formula keypads allow non-microprocessor laundry machines to have specific formulas for various soil classifications. Both keypads have bleach defeat and emergency stop buttons.



84-65-24 EDSM



844-40BBB0

## 844P Atlas Laundry in Plastic Enclosure

All the same electronic, programming, and pump features as the LaundryMaster but packaged in DEMA's newest plastic enclosure. High voltage is isolated in separate compartment for installation ease and safety. Modular design allows for easy addition of pump stations, with up to 6 pumps per dispenser.



### 844P-4JXXX

All 844P models can be purchased with a 20 formula select module (USM) in lieu of Enhanced Digital Select Module (EDSM.)

*(Note: An Enhanced Digital Select Module (EDSM) will be required for programming dispenser.)*

MODEL No.	NUMBER OF PUMPS	ENCLOSURE	KEYPAD MODULE
844P-3JJJ	3	Plastic	None
844P-3JJJ-E	3	Plastic	EDSM
844P-3JJJ-U	3	Plastic	20 Formula
844E-3JJJ-U	3	Stainless	9 Formula
844P-4JJJJ	4	Plastic	None
844P-4JJJJ-E	4	Plastic	EDSM
844P-4JJJJ-U	4	Plastic	20 Formula
844E-4JJJJ-U	4	Stainless	9 Formula
844P-5JJJJJ	5	Plastic	None
844P-5JJJJJ-E	5	Plastic	EDSM
844P-5JJJJJ-U	5	Plastic	20 Formula
844E-5JJJJJ-U	5	Stainless	9 Formula
844P-6JJJJJ	6	Plastic	None
844P-6JJJJJ-E	6	Plastic	EDSM
844P-6JJJJJ-U	6	Plastic	20 Formula
844E-6JJJJJ-U	6	Stainless	9 Formula

#### Relay Only LaundryMaster

Dispenser accepts signals from programmable laundry machine and pumps product for that set time. All programming is done at laundry machine. Relay Only Dispenser allows for a less expensive installation when dispenser programming is not required. (Only available in stainless steel enclosure).

- 844R-40BBBB0 4 pump dispenser
- 844R-5BBBBB0 5 pump dispenser
- 844R-5DBBBBB0 5 pump dispenser
- 844R-6BBBBBB 6 pump dispenser
- 844R-6DBBBBBD 6 pump dispenser

\* B designates 10 ounce per minute pump

\* D designates 40 ounce per minute pump



**845-6DDDDDD**

## 845 and 846 Industrial LaundryMaster™ Dispensers

845 and 846 Industrial Laundry Dispensers use the same dependable electronics as the 844 LaundryMaster but the large case design will accommodate 3,4,5, or 6 of DEMA's large 40 ounce per minute (1200 milliliters/minute) peristaltic pumps. All pumps are mounted on the front of a stainless steel cabinet.

**845 Series supplied with DC Motors**

**846 Series supplied with AC Motors**

**Special Models with no electronics**

**846-6NE115**

6 pump AC Dispenser with no electronics (115VAC)

**846-6NE230**

6 pump AC Dispenser with no electronics (230VAC)

MODEL No.	NUMBER OF PUMPS	KEYPAD SELECTION
845-4ODDDDDO	4	None
845-4ODDDDDO-9F	4	9 Formula
845-5DDDDDDO	5	None
845-5DDDDDDO-9F	5	9 Formula
845-6DDDDDDD	6	None
845-6DDDDDDD-9F	6	9 Formula

**REPLACE 845 WITH 846 FOR AC MOTOR MODEL NUMBER**

## 830 and 840 Series Single and Multi-Product Laundry Systems

830 and 840 Series LaundryMaster dispensers are designed to dispense 1 or 2 products into top loading, coin-op, and other laundry machines up to 50 pounds/25 kilograms capacity. Pumps are triggered by a signal from the laundry machine or by pushing start button.



**830K-1-1**

- 6 oz/180 ml per minute low maintenance peristaltic pump
- One dispenser has the ability to feed two machines
- Stackable pump head kits allow for easy field conversion from 2 to 4 products
- ABS enclosure with water tight seal

**830K-1-1** Single Product Liquid Laundry with 60 RPM motor and Installation kit

**830K-1-2** Single Product Liquid Laundry with 105 RPM motor and Installation kit

**831K-1-1** Two Product Liquid Laundry with 60 RPM motors and Installation kit

**831K-1-5** Three Product Liquid Laundry with 60 RPM motors and Installation kit

**831K-1-7** Four Product Liquid Laundry with 60 RPM motors and Installation kit

- If installation kit is not desired, leave letter "K" off of part number

**83-R1** One button remote start switch for 830 series dispensers.

**83-R2** Two button remote start switch for 830 series dispensers.



**840S-J**

## 840 Series

- Removable Key pad performs all programming
- Colored LED's indicate function in use
- Optional bleach pump available
- Pump volume is 8 ounces per minute
- Optional magnetic field sensors available to eliminate high voltage wiring

**840S-J** One product (detergent)

**840BS-JJ** Two products (detergent and bleach) pumped together

**81-245-1** 2 button programmer required for programming only

## Dilution at Hand™ Dispensing System

Dilution at Hand dispensers offer the convenience of filling spray bottles with one hand and the option of filling a bucket or scrubber with on/off control at the end of hose where operator is filling. These unique features, along with the traditional lever controlled actuation, make Dilution at Hand a truly revolutionary dispenser.

**FILL SPRAY BOTTLES WITH ONE HAND:** DEMA's Dilution at Hand valve design incorporates many of the positive features used with the successful 633 valve but turns the valve around 180 degrees for a smooth upward movement when the spray bottle pushes lever.

**REMOTE FILL AT DISPENSING POINT:** Dilution at Hand's patented remote filling option uses a hand held gun operating as a pilot valve back to water valve for easy on/off control at the end of hose where operator is filling. There are no moving parts, just water being moved from the water valve to the gun and back. Now, instead of moving your bucket or scrubber to the dispenser, take the dispenser to your point of use using the remote fill option.

Dilution at Hand offers both 1 and 4 gallon per minute proportioners, Action Gap backflow or Air Gaps, and Dial-A-Blend capability. A dispenser can be built to meet any desired application.

## Single Station Options

**Note:** All models listed are shipped with DEMA's ASSE 1055B approved Action Gap backflow preventer. Replace the letters GAP with AG to include an Air Gap proportioner instead of Action Gap.

### 1 GPM Bottle Fill (4 liters/minute)

MODEL No.	ACTIVATION METHOD	NUMBER OF CHEMICAL PRODUCTS
701GAP	Bottle or Button Activated	One Chemical
703GAP	Bottle or Button Activated	Four Chemical Dial-A-Blend
705GAP	Bottle or Button Activated	One Chemical at Four Dilutions
707GAP	Bottle Activated Only	One Chemical
709GAP	Bottle Activated Only	Four Chemical Dial-A-Blend

### 4 GPM Bucket Fill (16 liters/minute)

MODEL No.	ACTIVATION METHOD	NUMBER OF CHEMICAL PRODUCTS
702GAP	Button Activated	One Chemical
702GAP-RF	Remote Fill Activated	One Chemical
704GAP	Button Activated	Four Chemical Dial-A-Blend
704GAP-RF	Remote Fill Activated	Four Chemical Dial-A-Blend
706GAP	Button Activated	One Chemical at Four Dilutions
706GAP-RF	Remote Fill Activated	One chemical at Four Dilutions



ONE HAND FILL



702GAP-RF



709GAP



701GAP



REMOTE FILL

## Dilution at Hand™ Dispensing System

### Multi Station Units

Dilution at Hand Dispensers may be built to meet any dispensing requirement. DEMA has several factory built multi-station units set up or can build a special unit to meet your requirements. (Minimum order required for factory built special units)

**Note:** All models listed are shipped with DEMA's ASSE 1055B approved Action Gap backflow preventer. Replace the letters GAP with AG to include an Air Gap proportioner instead of Action Gap.

### Multi Station Units With Single Product Proportioners

MODEL	LEFT STATION FLOW AND ACTIVATION	RIGHT STATION FLOW AND ACTIVATION
720GAP	Bottle or Button Activated 1 GPM (4 liters/minute)	Bottle or Button Activated 1 GPM (4 liters/minute)
721GAP	Bottle Activated 1 GPM (4 liters/minute)	Bottle Activated 1 GPM (4 liters/minute)
722GAP	Button Activated 4 GPM (16 liters/minute)	Bottle or Button Activated 1 GPM (4 liters/minute)
722GAP-RF	Remote Fill Activated 4 GPM (16 liters/minute)	Bottle or Button Activated 1 GPM (4 liters/minute)
724GAP	Button Activated 4 GPM (16 liters/minute)	Button Activated 4 GPM (16 liters/minute)
724GAP-RF	Remote Fill Activated 4 GPM (16 liters/minute)	Remote Fill Activated 4 GPM (16 liters/minute)

### Multi Station Dispensers with Dial-A-Blend Proportioners

MODEL	LEFT STATION FLOW AND ACTIVATION	RIGHT STATION FLOW AND ACTIVATION
730GAP	Button Activated 4 GPM (16 liters/minute)	Bottle or Button Activated 1 GPM (4 liters/minute) 4 Product Dial-A-Blend
730GAP-RF	Remote Fill Activated 4 GPM (16 liters/minute)	Bottle or Button Activated 1 GPM (4 liters/minute) 4 Product Dial-A-Blend
731GAP	Button Activated 4 GPM (16 liters/minute) 4 Product Dial-A-Blend	Bottle or Button Activated 1 GPM (4 liters/minute) 4 Product Dial-A-Blend
731GAP-RF	Remote Fill Activated 4 GPM (16 liters/minute) 4 Product Dial-A-Blend	Bottle or Button Activated 1 GPM (4 liters/minute) 4 Product Dial-A-Blend



722GAP-RF



730GAP

### Dilution at Hand Rack Options

Dilution at Hand Dispensers mounted to chemical storage racks. These dispensers offer a complete system keeping chemical containers off the ground in a safe manner and a drip tray mounted to the rack. Single and four station racks are available standard. Custom racks with various stations and sizes can be made if minimum lot sizes are met.

**701GAP-RACK:**

One gallon bottle rack with 701GAP dispenser attached.

**702GAP-RACK:**

One gallon bottle rack with 702GAP dispenser attached.

**702GAP-RF-RACK:**

One gallon bottle rack with 702GAP-RF dispenser attached.

**730GAP-RACK:**

Four gallon bottle rack with 730GAP dispenser attached.

**730GAP-RF-RACK:**

Four gallon bottle rack with 730GAP-RF dispenser attached.

**731GAP-RACK:**

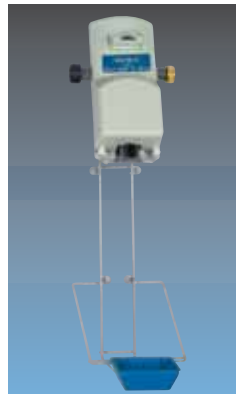
Four gallon bottle rack with 731GAP dispenser attached.

**731GAP-RF-RACK:**

Four gallon bottle rack with 731GAP-RF dispenser attached.

6.5" W X 20" H X 7" D on 701GAP-RACK

25" W X 20" H X 7.5" D on 731GAP-RF-RACK



701GAP-RACK



731GAP-RF-RACK

## Blend Safe II Dispensing System

Blend Safe II is a modular, locking dispensing system that allows user to dispense chemicals safely, control dispenser inventory, and have the flexibility in the field to meet changing requirements at different accounts.

- Locking cabinets molded in durable Polypropylene
- Removable drip tray
- Units are held together with easy to use clips
- Locking cabinets can be mounted on a vertical or horizontal plane
- Cabinet accommodates various bottle sizes (up to 5 liters)

MODEL NUMBERS: All model numbers listed below include DEMA's Action Gap backflow preventer. Specify the letters AG instead of GAP if DEMA's Ultra Gap Air Gap proportioner is preferred.

Last suffix number designation:

1 is 1 gallon per minute flow (4 liters/minute)

4 is 4 gallon per minute flow (16 liters/minute)

### 1 Station

662-GAP-1 (1gpm)

662-GAP-4 (4gpm)

### 2 Station-one dual button cabinet

662-2GAPDB-11

662-2GAPDB-14

662-2GAPDB-44

### 2 Station-two single button cabinets

662-2GAP-11

662-2GAP-14

662-2GAP-44

### 3 Station

662-3GAP-1

662-3GAP-114

662-3GAP-144

### 4 Station-two dual button cabinets

662-4GAP-1111-2

662-4GAP-1114-2

662-4GAP-1144-2

### 4 Station-four single button cabinets

662-4GAP-1111-4

662-4GAP-1114-4

662-4GAP-1144-4

### Dial-A-Blend

662-639GAP (4 products @ 1gpm, 1 product @ 4gpm)

662-637GAP-1 (4 products @ 1gpm)

662-637GAP-4 (4 products @ 4gpm)

662-635GAP-4 (1 product @ four dilutions 4gpm)



662-GAP-1



662-4GAP-1114-2



662-639GAP  
(cabinets shown vertical)

## Dispenser Only (No locking cabinets included in the part numbers below)

66-144GAP-1 One button top – 1gpm (4 liters/minute)

66-146GAP-1 One button top – 4gpm (16 liters/minute)

66-148GAP-1 Two button top – 1gpm/1gpm

66-148GAP-2 Two button top – 1gpm/4gpm

66-149GAP-2 1 product @ four dilutions 4gpm

66-150GAP-1 4 products @ 1gpm

66-150GAP-2 4 products @ 4gpm

66-151GAP 4 products @ 1gpm and 1 product @ 4gpm

66-151GAP-2 4 products @ 1gpm and 4 products @ 4gpm



66-148GAP-2



66-151GAP-2



## Blend Centers and Blend Safe Dispensers

Blend Centers and Blend Safe dispensers use DEMA's modular 633 valve body to create the dispenser needed for any field installation. Choose from single button plastic units, multi station stainless steel units or the lockable 661 stainless steel series.

**633 Series** Plastic Blend Center's modular design lets you easily couple together any number of stations to create a system that meets your specific needs. Mix and match both high and low flow units for filling spray bottles, buckets, sinks, and other reservoirs. Choose from blue, red, green, yellow, black, or white buttons.

**MODEL NUMBERS:** All model numbers listed below include DEMA's Action Gap backflow preventer. Specify the letters AG instead of GAP if DEMA's Ultra Gap Air Gap proportioner is preferred.

**Model 633GAP-1**

Action Gap backflow with 1 gpm (4 liters/minute) proportioner

**Model 633GAP-4**

Action Gap backflow with 4 gpm (16 liters/minute) proportioner



3 MODEL 633GAP UNITS SHOWN COUPLED TOGETHER

633GAP-B1



## 681 Series Stainless Steel and Plastic Cover Blend Centers

Models listed below include 4 gpm (16 liters/minute) proportioners. All models can be ordered with any combination of 1 or 4 gpm (4 or 16 liters/minute) proportioners. Contact Customer Service for additional model numbers.

STATION	MODEL No.	COVER MATERIAL
1	681GAP-1	Stainless Steel
2	681GAP-2	Stainless Steel
2	681GAP-2P	Plastic
3	681GAP-3	Stainless Steel
3	681GAP-3P	Plastic
4	681GAP-4	Stainless Steel
5	681GAP-5	Stainless Steel



681GAP-2



681GAP-3P

## 661 Series Lockable Stainless Steel Dispensers

Offer safety and security when it is necessary for gallon bottles to be self contained inside the dispenser. Units are lightweight and have a mounting flange outside the dispenser for easy installation.

**Model 661GAPB** one station (1 gpm) with Action Gap backflow preventer

**Model 661GAPDB** one station with two buttons (1 gpm and 4 gpm) with Action Gap backflow preventer

**Model 661GAP-4** four station with Action Gap backflow preventer (standard configuration is three 1 gpm proportioners and one 4 gpm proportioner)

**Model 661GAPS-4** four station with Action Gap backflow preventer and stainless steel drip tray



661GAP-4



661GAPDB

## Accessories and Spare Parts



**44-3N-6**

**44-3N-6**  
Six feet (2 meters)  
nylon braided hose  
**44-3-6**  
Six feet (2 meters)  
black hose



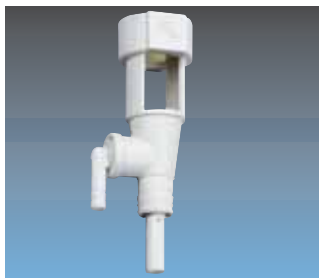
**66-43**

**66-43**  
Pressure regulator  
(40 psi / 2.5 bar) with  
GHT connections



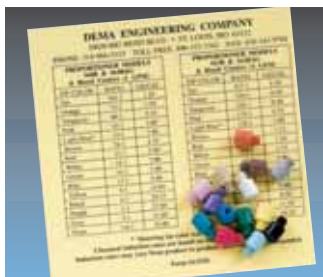
**16-30 with 61-22-3**

**16-30**  
Action Gap backflow  
preventer  
**61-22-3**  
Four gpm proportioner  
**61-99-2**  
One gpm proportioner



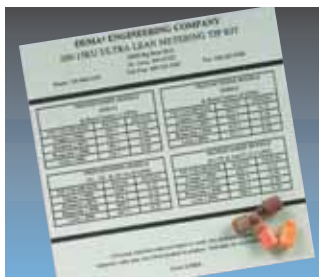
**61-22-3BAG**

**61-22-3BAG**  
Four gpm air gap  
proportioner  
**61-32BAG**  
One gpm air gap  
proportioner



**100-15K**

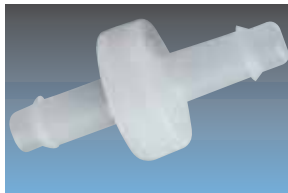
**100-15K** Tip kit  
**100-15KU** Ultra lean tip kit  
**44-61P** Capillary metering tip for lean dilutions



**100-15KU**



**68-6**



**60-54**

**68-6**  
Pressure Indicating Tee  
with Garden Hose Threads  
*To meet various municipal plumbing  
codes for backflow prevention*  
**68-6QD1**

Pressure Indicating Tee  
with Male Quick Disconnect  
**68-6QD2**

Pressure Indicating Tee  
with Male and Female Quick  
Disconnect



**100-16E**

**100-16E**  
1/4" and 3/8" Diaphragm foot  
valve with EP seal

**100-16S**  
1/4" and 3/8" Diaphragm foot  
valve with silicone seal

**100-16V**  
1/4" and 3/8" Diaphragm foot  
valve with viton seal

**60-54**  
1/4" in line check valve  
**100-12**

Eight feet 1/4"  
ID inlet tubing

**61-21**  
Six feet 1/2" ID outlet tubing for  
Action Gap backflow preventer  
and proportioner

**63-83**  
Six feet 9/16" ID outlet tubing  
for Air Gap proportioner

## Racks for Chemical Bottle Storage

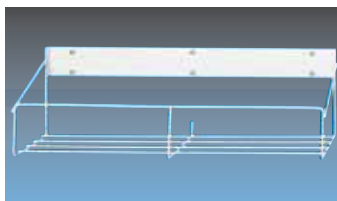
- 930-1R** One station non locking rack for round bottles
- 930-1F** One station non locking rack for F-style bottles
- 931-2** Two station locking rack
- 930** Three station non locking rack
- 931** Three station locking rack



**930-1F** 7 5/8"x4 3/8"



**931-2** 13 1/2"x6 1/2"



**930** 19 1/2"x7 7/16"



**931** 19 1/2"x6 1/2"

## High Flow Dispensers

**Model 607-3** High Flow Dispenser fills Auto Scrubbers and other large reservoirs at 10 gallons per minute (40 liters per minute) to reduce fill time.

- 10 gpm flow rate at 40 psi (3/4" or larger water supply required)
- Vacuum breaker installed
- 6 feet discharge hose
- Metering tips determine dilution ratio
- Stainless steel cover offers durability and industrial appearance
- PVC proportioner allows dual chemical injection



**607-3**

### Model 162HDM-2

High Flow Drum Mount Proportioner mounts directly to a 2 1/2" bung opening on a drum or tote and dispenses at 10 gallons per minute (40 liters per minute).

- 10 gpm flow rate at 40 psi
- Draws up to 12 ounces per gallon chemical solution
- Discharge hose can be up to 25 feet (8 meters) long
- Shutoff valve (DEMA #90-15) can be put at end of hose for on/off control
- Metering tips determine dilution ratio



**162HDM-2**

## Drum Mount Dispensers

**Model 161 and 162** Series drum mount dispensers mount to any 2 1/2" bung opening to dispense chemical solution directly from the drum or tote at the correct dilution. Various models are available to meet standard and high induction applications.

**Model 162** Standard model dispenses 5 gpm (20 liters per minute) with maximum induction of 5-1, metering screw adjustment

**Model 162-3** Standard model dispenses 5 gpm with a maximum induction of 5-1, metering tip adjustment

**Model 161** High induction model dispenses 5 gpm with a maximum induction of 1.5-1, brass construction with metering screw adjustment.

**Model 162HC** High induction model dispenses 1/2 gallon per minute (2 liters per minute) with a maximum induction of more than 1-1 ratio. Ideal dispenser for applications such as antifreeze mixing where more product than water is required.

**Model 162HCGHT** Allows up to 50 feet (15 meters) of outlet hose to be attached and the use of a spray gun or foam wand. Unit is capable of drawing a 4-1 dilution ratio. Comes complete with a 25 feet (8 meters) nylon braided outlet hose and spray gun. Ideal unit for the spraying of asphalt release agents on truck beds.



**162**



**162HC**



**162HCGHT**

## Roam 'n Foam Spray and Foam Dispenser

### Effective cleaning and sanitizing

- Supermarket meat room, seafood, and bakery departments
- Kitchens and food preparation areas
- Locker rooms and showers in schools and health clubs
- Food processing and packaging plants

### Innovative Features and Benefits

- Patent pending single knob to control water flow and chemical selection
  - Full water flow when valve opens
  - Accurate dilutions
  - Eliminates confusion
  - Prevents mixing of chemicals
- Removable Injector
  - 3 flow rates to choose from
  - Easy maintenance and replacement
- Built in foam wand hanger
  - Helps prevent foam wand loss or damage



Detachable molded foam wand slides into dispenser when not being used.

625RNF-3

## Specifications

- Dimension  
9 1/2"W x 11 1/2"H x 4" W  
(240 mm x 292 mm x 102 mm)
- Injector Flow Rate  
2.5, 3 and 3.5 gallons per minute  
(9.5, 11.5 and 13.5 liters per minute)
- Operating Range  
20-125 psi (1.3 - 8.6 bar)
- Water temperature up to  
160°F (71°C)
- Functions with up to 50 feet  
(15 meters) of 1/2" (13 mm) ID hose
- Built in hose hanger
- Polypropylene components

### MODEL NUMBERS AND KITS

625RNF	Dispenser only
625RNF-2	Dispenser with 44-3RG red outlet hose, 44-3-6 black inlet hose, and 40-14QD/292QD spray gun / foam wand kit
625RNF-3	Dispenser with 44-3RG red outlet hose, 44-3-6 black inlet hose, 28-1QD spray gun and 292GQD foam wand
625RNF-4	Dispenser with 44-3RG red outlet hose, 44-3-6 black inlet hose, 40-14QD/292QD spray gun / foam wand kit and 44-89-112 backflow preventer
625RNF-5	Dispenser with 44-3RG red outlet hose, 44-3-6 black inlet hose, 28-1QD spray gun, 292GQD foam wand and 44-89-112 backflow preventer

### ACCESSORIES

44-3RG	25 feet (8 meters) red hose
44-3N-25	25 feet (8 meters) clear nylon braided hose
44-3-6	6 feet (2 meters) black hose
44-3N-6	6 feet (2 meters) clear nylon braided hose
40-14QD/292QD	Ball valve activated spray gun with quick connect foam wand
28-1QD	Lever controlled spray gun with quick connect nozzle
292GQD	Quick connect foam wand
44-89-112	ASSE 1012 approved constant pressure backflow preventer
44-111-1560	Brass nozzle with quick connect groove
44-111-1560SS	Stainless steel nozzle with quick connect groove

*Additional hoses, spray guns, foam wands, nozzles, and other accessories available through DEMA Customer Service*

## SprayClean Accessories



**28-1QD and 292QD**  
Spray Gun and Foam Wand set  
(order items separately)



**40-14QD/292QD**  
Spray Gun and Foam Wand set



**44-89**  
Constant pressure backflow preventer



**44-3N-25**  
25 Feet (8 meters) nylon braided outlet hose

**44-3**  
25 Feet (8 meters) black outlet hose  
**44-3RG** (shown)  
25 Feet (8 meters) red outlet hose



**44-3N-6**  
6 Feet (2 meters) nylon braided water supply hose  
**44-3-6** (shown)  
6 Feet (2 meters) black water supply hose  
**44-4S**  
Stainless steel hose bracket

DEMA manufactures a variety of SprayClean dispensers to meet different cleaning environments. Whether it's a wall mounted unit for cleaning one area or a mobile unit that offers portable cleaning, DEMA can satisfy the requirement. Wash, rinse, and sanitize all from the same system.

**Model 606T** Select-O-Matic: Ball valve actuated SprayClean that dispenses two chemical products and clear rinse.

- Stainless steel cover
- Polypropylene injectors for chemical and hard water resistance
- Brass internal components



**606T**

## Mobile SprayClean

**Model 901-625RNF** Mobile Cleaning System puts everything needed for portable cleaning on two wheels. Unit offers mobile foaming, rinsing and sanitizing for cleaning school showers, large kitchens, food processing plants and grocery store food preparation areas.

- Two wheel cart with pneumatic tires and plastic frame (600 lb. capacity)
- 625RNF SprayClean dispenser
- 25 feet (8 meter) outlet hose and 6 feet (2 meter) water inlet hose
- Hanger for both hoses
- Spray gun and foam wand
- Clip to hold detachable foam wand



**901-625RNF**

## Compressed Air Foamers

**Model 294D** mixes chemical solution with water and air to produce a dry, thick, clinging foam to any vertical or horizontal surface for cleaning large areas and areas that require a foam to penetrate for better cleaning results. The foam consistency is changed easily by adjusting either the air or water pressure. PVC body is designed to prevent hard water and chemical buildup to help produce consistent, long term cleaning results.

Applications include:

- food processing plants
- truck and vehicle washing
- bakeries
- school shower areas
- other industrial areas

### Model 294D

PVC Compressed Air Foamer body with air inlet port, air adjustment gauge, water inlet connection and tubing for chemical supply. Simply hook up compressed air and water and adjust to produce desired foam. Metering tips determine the correct chemical dilution. Minimum recommended air and water pressure with 25 feet of hose is 40 psi.



294D



294DC

### Model 294DC

Designed for applications that require a compressed air foamer enclosed in a stainless steel housing and ball valves for on/off control of water and air. Air pressure gauge is seen through front cover and easily adjusted while the unit is mounted. Metering tips determine the correct chemical dilution.

### Model 294DDM

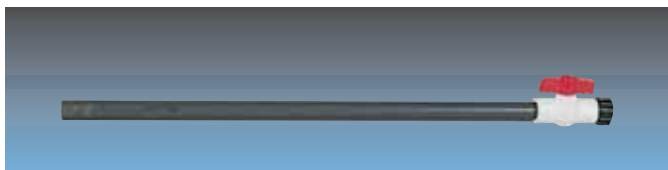
Drum Mounted version of 294D for easy attachment to 55 gallon drum or tote container.



294DDM

### Model 93-18

PVC Foam wand used with all DEMA compressed air foamers. Includes water inlet coupling, ball valve for on/off control, and nozzle. Foam throw varies based on water and air pressure mixture. Average throw is 25 feet (8 meters).



### 93-18

### Model 93-14

25 feet 3/4" ID black water outlet hose. 3/4" ID hose is recommended to minimize back pressure put on foamer.

#### MAXIMUM HOSE LENGTHS AND MINIMUM PRESSURES FOR GOOD FOAM

HOSE SIZE AND LENGTH	MINIMUM PRESSURES	
	Water	Air
25 Feet (8 Meters) of 3/4" ID	40 PSI (2.7 Bar)	40 PSI
50 Feet (15 Meters) of 3/4" ID	50 PSI (3.4 Bar)	40 PSI
75 Feet (25 Meters) of 3/4" ID	60 PSI (4.1 Bar)	40 PSI

## Portable Foaming and Spraying

### Model 289

Pro Foam hose end foamer and sprayer attaches to the end of any garden hose and produces a foam when the aerating wand is attached and sprays when the wand is removed.

Quick disconnect allows spray gun to be easily removed from dispenser for clear water rinse. Ideal applications include supermarkets, food service areas, and shower rooms where portability is required. Unit includes a 32 ounce bottle and spray gun with quick disconnect fittings.



289

## FoamStation Dispensers

FoamStation Dispensers are wall mounted or cart mounted compressed air foaming systems that use DEMA's 294D PVC foamer body. Applications for these units include all food processing and food service areas, industrial plants, school shower areas, and other areas that require foaming chemicals to help clean.

Units require an air compressor and at least 40 psi water pressure to produce quality foam.

- PVC foamer body for chemical and hard water resistance
- Polypropylene cover offers neat appearance
- Stainless mounting plate for sturdy mounting
- PVC manifold with slip together fit offers easy field maintenance
- Metering tips determine dilution ratio

### Model 692T

Two ball valves provide one foaming chemical and clear rinse from this wall or cart mounted unit.

### Model 693T

Three ball valves provide one foaming chemical, clear rinse, and a sanitizer (or other chemical product) spray. The sanitizer product is run through DEMA's P203CT injector that produces 2.7 gallons per minute (10.25 liters per minute) flow.

### Model 93-18

PVC Foam wand with plastic ball valve can be used with any of DEMA's compressed air foamers. Material allows it to be used with corrosive chemicals, including many acids.



692T



693T

## FoamStation Mobile Dispensers

### Model 901-692T

692T Dispenser mounted to mobile cart for portable foaming applications. Unit includes 6 feet (2 meter) water supply hose, 25 feet (8 meter) outlet hose, and foam wand assembly. Foam wand includes ball valve for on/off control at point of use.

### Model 901-693T

693T Dispenser mounted to mobile cart for portable foaming applications where an additional sanitizer spray is required. Unit includes 6 feet (2 meter) water supply hose, 25 feet (8 meter) outlet hose, foam wand assembly and spray gun.

### Model 901-294DC

294DC Dispenser mounted to mobile cart for portable foaming applications. Unit includes 6 feet (2 meter) water supply hose, 25 feet (8 meter) outlet hose, and foam wand assembly. Foam wand includes ball for on/off control at point of use.

#### NOTE:

Air compressor is required at location of use for above units. Air compressor is not part of dispenser.



901-693T

## MixRite Water Powered Proportioning Pump

- Uses only 20% of pressure to drive the pump
- No electricity required
- Low maintenance
- Precise, reliable dosing regardless of changes in water flow or pressure
- Easy to adjust
- Fewer moving parts than competitive models
- Piston seals easily replaced
- No tools required for disassembly
- Chemical cylinder is polyethylene

Chemical Shutoff



571



### BYPASS

(Models 576, 577, 578, 579)  
For corrosive and aggressive fluids that may damage internal pump parts. These models allow chemical to bypass main pump engine and are injected into the pump discharge line.

### SPECIFICATIONS:

- Available with or without control valve that allows the shutoff of chemical while water is still flowing through the unit
- Injection rate from .2% to 10%
- Injection ratios from 1:500 to 1:10
- Flows from .09 gpm to 11 gpm
- Water pressure from 2.9 psi to 85 psi
- Chemical resistant construction, Buna seals, and 302 stainless springs
- Viton o-ring and hastelloy spring available for chemical check valve
- Bypass models for harsh chemicals
- Includes 7 ft. inlet tubing and foot valve strainer
- Dimensions are 19 1/2" high, 7" wide
- Hose barbs with swivel for easy installation



574



**57-11-1 Tip Kit**  
for Lean Dilution Ratios  
750:1  
1000:1  
1500:1  
2000:1  
Includes 4 metering tips,  
8 ft. 1/4" vinyl hose and  
1/4"x3/8" barb adapter



**50-41-1 Strainer**  
200 Mesh (80 Micron)  
Strainer  
recommended on all  
MixRite installations



578IN

### APPLICATIONS:

- Vehicle Wash
- Food and Beverage  
Sanitizing, Cleaning and  
Lubricating
- Machine Tool Coolants  
and Metal Processing
- Animal Medication
- Foaming for Food Service  
Sanitation
- Fertigation
- Many other applications  
where applying liquid  
under pressure

### 10 MixRite Models to meet your applications

**FLOW RANGE** .09-11 GPM (.34-41.6 LPM)

**OPERATING TEMP.** 37-122 F (4C-50 C) *Note: Models 576 and 577 39F-104 F (4C-40C)*

MODEL	PRESSURE		INDUCTION				OPTIONS
	Ratio	Percent	Oz/Gal	MI/Liter			
570	2.9 - 85 PSI	.19-5.8 BAR	500:1 to 50:1	.2% to 2%	.25 to 2.5	2 to 20	* Tip Kit
571	2.9 - 85 PSI	.19-5.8 BAR	500:1 to 50:1	.2% to 2%	.25 to 2.5	2 to 20	Chemical On/Off * Tip Kit
<i>* Note: With Tip Kit 57-11-1</i>			2000:1 to 750:1	.05% to .13%	.06 to .17	.5 to 1.3	
572	2.9 - 85 PSI	.19-5.8 BAR	250:1 to 25:1	.4% to 4%	.51 to 5.0	4 to 40	
573	2.9 - 85 PSI	.19-5.8 BAR	250:1 to 25:1	.4% to 4%	.51 to 5.0	4 to 40	Chemical On/Off
574	2.9 - 60 PSI	.19-4.08 BAR	33:1 to 10:1	3% to 10%	3.8 to 12.8	3 to 100	
575	2.9 - 60 PSI	.19-4.08 BAR	33:1 to 10:1	3% to 10%	3.8 to 12.8	3 to 100	Chemical On/Off
<b>BYPASS</b>							
576IN	2.9 - 85 PSI	.19-5.8 BAR	500:1 to 50:1	.2% to 2%	.25 to 2.5	2 to 20	* Tip Kit
577IN	2.9 - 85 PSI	.19-5.8 BAR	500:1 to 50:1	.2% to 2%	.25 to 2.5	2 to 20	Chemical On/Off * Tip Kit
<i>* Note: With Tip Kit 57-11-1</i>			2000:1 to 750:1	.05% to .13%	.06 to .17	.5 to 1.3	
578IN	2.9 - 85 PSI	.19-5.8 BAR	500:1 to 50:1	.4% to 4%	.51 to 5.0	4 to 40	
579IN	2.9 - 85 PSI	.19-5.8 BAR	500:1 to 50:1	.4% to 4%	.51 to 5.0	4 to 40	Chemical On/Off

*INDUCTION RATIOS ARE BASED ON WATER THIN PRODUCTS  
(1CPS) HIGHER VISCOSITIES WILL AFFECT INDUCTIONS*



## Wall and Cart Mounted Compressed Air Foam Systems

MixRite Compressed Air Foam Systems allow any length of hose installed on the outlet of dispenser. The hose length or foam wand nozzle size have no affect on the foam quality, which makes these dispensers ideal for foaming applications utilizing long runs of hose or pipe.



**Wall Mount Foam System**  
Compressed Air Foam Systems that include MixRite, foam chamber, 25' hose, and foam wand. (Wall mount spray systems also available).



**Cart Mount Spray System**  
Mobile Cleaning/Sanitizing Systems that include MixRite, 25' hose and spray gun. (Mobile foam systems also available).

### Wall Mounted Units

- 570WS Spray unit, 2% induction
- 571WSR Spray and Rinse unit, 2% induction
- 572WS Spray unit, 4% induction
- 573WSR Spray and Rinse unit, 4% induction
- 573WSFR Spray, foam and Rinse unit, 4% induction
- 573WAFR Compressed Air Foam and Rinse unit, 4% induction
- 576WBS Spray bypass unit, 2% induction
- 577WBSR Spray and Rinse bypass unit, 2% induction
- 578WBS Spray bypass unit, 4% induction
- 579WBSR Spray and Rinse bypass unit, 4% induction
- 579WBSFR Spray, Foam, and Rinse bypass unit, 4% induction
- 579WBAF Compressed Air Foam bypass unit, 4% induction

### Cart Mounted Units

- 570CS Spray unit, 2% induction
- 571CSR Spray and Rinse unit, 2% induction
- 572CS Spray unit, 4% induction
- 573CSR Spray and Rinse unit, 4% induction
- 573CSFR Spray, foam and Rinse unit, 4% induction
- 573CAFR Compressed Air Foam and Rinse unit, 4% induction
- 576CBS Spray bypass unit, 2% induction
- 577CBSR Spray and Rinse bypass unit, 2% induction
- 578CBS Spray bypass unit, 4% induction
- 579CBSR Spray and Rinse bypass unit, 4% induction
- 579CBSFR Spray, Foam, and Rinse bypass unit, 4% induction
- 579CBAF Compressed Air Foam bypass unit, 4% induction

## MixRite Panels MixRite Panel Systems

FLOW RANGE .09 - 11 GPM (.34 - 41.6 LPM) - OPERATING TEMP 37 - 122F (4 - 50C)

MODEL	PRESSURE	INDUCTION	# OF CHEMICALS		FOAMING	OPTIONS
			Ratio	Percent		
570VFP-1	2.9 - 85 PSI .19 - 5.8 BAR	500:1 - 50:1	.2% - 2%	1	yes	can be connected in series
570VFP-2	2.9 - 85 PSI .19 - 5.8 BAR	500:1 - 50:1	.2% - 2%	2	yes	
570VFP-3	2.9 - 85 PSI .19 - 5.8 BAR	500:1 - 50:1	.2% - 2%	3	yes	
570VWP-1	2.9 - 85 PSI .19 - 5.8 BAR	500:1 - 50:1	.2% - 2%	1	no	can be connected in series

### Vehicle Foaming Panels (VFP) include:

- 570 MixRites
- Inlet ball valve for strainer maintenance
- 200 mesh strainer
- 3/4" DEMA brass diaphragm valve (specify 24 VAC or 120 VAC)
- One inlet ball valve per station for flow control
- Outlet PVC check valve
- Plexiglas panel
- 1/2" stainless steel diaphragm valve and air regulator with pressure gauge

### Vehicle Wash Panel (VWP) include:

- Same as VFP less air regulator, gauge and valve



**570 VWP-1**

## Chemical Injectors

DEMA manufactures two different types of injectors, each having their own way to control water flow. The C series injectors use one of three different water nozzle bushings to control water flow and the B series use an external bypass knob for controlling water flow. Injectors are available from 1/8" NPT up to 1" NPT. (BSP threaded injectors available). When choosing an injector it is important to size the injector according to the application's water flow, not pipe size. Injector metering knobs can be supplied with a metering tip option (example 204CT) or metering screw option (example 204C).

FOR DETAILED INFORMATION ON DEMA'S B AND C SERIES INJECTORS AND SELECTION TABLES REQUEST CATALOG 2005IND OR VISIT OUR WEB SITE AT [WWW.DEMAENG.COM](http://WWW.DEMAENG.COM).



204C



204B

## Special Injectors

### Model 201CHT

1/8" brass injector designed to draw up to 1-1 ratio at 1/2 gallon per minute (2 liters per minute) flow. Ideal for mixture of antifreeze and water for windshield washer filling.

**DEMA OFFERS SEVERAL PLASTIC AND STAINLESS STEEL INJECTORS FOR CORROSIVE APPLICATIONS.**

### Model P203C or P203CT:

3/8" polypropylene plastic injector with flow rate of 4 GPM at 40 psi (16 liters per minute at 2.75 bar)

### Model 203BS-2 or 203BST-2:

3/8" stainless steel injector with flow rate range of 3 to 9 GPM at 40 psi (12 to 36 liters per minute at 2.75 bar)



P203C



203BS-2

## SprayClean Injectors

SprayClean Injectors do not include covers, ball valves, or any other device to make them a complete system. These units include the injector assembly, appropriate spray gun for each model and the chemical inlet tubing assembly. These are very basic units that may be wall or drum mounted to dispense one chemical.

**Model 244C** Three-position gun allows user to choose chemical, clear water rinse, and off setting at the spray gun. When gun trigger is pulled completely, vacuum is drawn in injector and chemical is dispensed through spray gun. Releasing the trigger halfway to rest against a latch will eliminate vacuum draw of chemical and only spray clear water for rinsing.



244C

**Model 244BC** Slide valve on chemical injector allows user to choose between wash and rinse setting. Squeezing the spray gun fully open turns the unit on and dispenses either the chemical or clear rinse, depending on slide valve setting. (This model allows for a harder spray when rinsing compared to the 244C model).

### Model 244CDM

Drum Mount Model of 244C

### Model 244BCDM

Drum Mount Model of 244BC

## APPROVALS

**DEMA Engineering Co.**  
ISO 9001:2000 Certified



### Action Gap Backflow Preventer

ASSE 1055-1997  
IAPMO  
CSA  
Various U.S. states and cities  
Australia

### Ultra Gap Air Gap Proportioner

ASSE 1055-1997  
IAPMO  
CSA  
Various U.S. states and cities  
KIWA-Netherlands  
Australia  
DVGW-Germany  
WRC-United Kingdom

### Model 153 and 154

ASSE 1055-97

### 633 Valve Body

NSF-61

### 58-1 Siphon Breaker

ASSE 1001

### DEMAMaster Dishwash Series

CSA

### TITAN Dishwash

CE, CSA

### ATLAS Laundry

CE, CSA

## METRIC CONVERSIONS

METRIC CONVERSIONS		
To go from	Multiply by	To get
Gallons	3.785	Liters
Ounces	29.57	Milliliters
PSI	0.068	Bar
Inches	25.4	Millimeters
Fahrenheit	$5/9(F-32)$	Celsius
Liters	0.2642	Gallons
Milliliters	0.34	Ounces
Bar	14.5	PSI
Millimeters	0.0394	Inches
Celsius	$9/5C+32$	Fahrenheit



**DEMA Engineering Company**

10020 Big Bend Boulevard  
St. Louis, Missouri 63122  
Telephone: 800-325-3362  
Fax: 314-965-8319  
Website: [www.demaeng.com](http://www.demaeng.com)

**DEMA Europe LLC**

Mast 25, 3891 KE  
Zeewolde, Netherlands  
Telephone: 31- (0)-36-522-7006  
Fax: 31-(0)-36-522-7863  
Website: [www.demaurope.com](http://www.demaurope.com)

**DEMA Australia**

Unit 5, 7-11 Parraweena Road  
Caringbah N.S.W. 2229  
Sydney, Australia  
Telephone: 61-2-9525-5177  
Fax: 61-2-9525-5033  
E-Mail: [sales@demaust.com](mailto:sales@demaust.com)

**DEMA China Representative Office**

Room 1317, SIPAI Plaza  
103 Cao Bao Road  
Shanghai, 200233 P.R. China  
Telephone: 86 21-5424 6629  
Fax: 86 21 6464 1721  
E-Mail: [johnzhu@demachina.com.cn](mailto:johnzhu@demachina.com.cn)

**DEMA Latin America Sistemas de Dosagem Ltda**

Rua Andre Ampere, 153 Cj. 67  
Edificio Terra Brasiliis  
CEP 04562-080 Brooklin Sao Paulo Brazil  
Telephone/fax: (5511) 3596-3477  
Mobile: (5511) 8579-3477  
E-Mail: [omarpuras@uol.com.br](mailto:omarpuras@uol.com.br)